

OfficeServ™ Link/EasySet Enterprise IP Solutions

OfficeServ Link is an application gateway that provides the interface between other software applications (both Samsung and third party) and the Samsung product line of telephone systems. It is a software application that links the telephone system to a Windows®-based computer that is dedicated to the sole use of OfficeServ applications. The computer then becomes an application server for the family of OfficeServ applications.

OfficeServ Link allows multiple OfficeServ Computer Telephony Integration (CTI) applications and clients to connect to the OfficeServ Series phone systems simultaneously without the need for multiple system level interface ports and complicated hardware interface modules. This application gateway provides a consolidated software licensing module for all OfficeServ CTI products. This consolidated module allows Samsung to use a customer friendly licensing key without having to use any type of hardware dongles or other hardware-based solutions that are difficult to use and can easily become damaged or lost.

OfficeServ Link combined with OpenTSP provides an industry standard developer interface that builds on the TAPI 2.x specification.



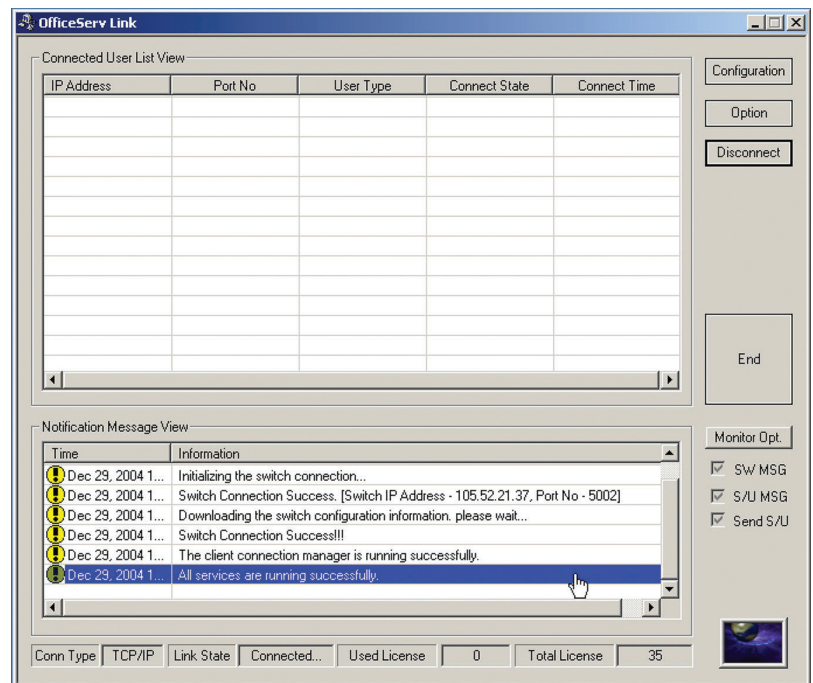
SAMSUNG

OfficeServ™ Link & EasySet

OfficeServ EasySet is a web-enabled management tool that provides the key telephone users a simple and friendly way to configure the features and button assignments of Samsung digital or IP keysets. This application tool uses Internet Explorer to display a representation of the telephone. Using a set of intuitive actions, the user can configure many of the options available, including the following:

- ▶ Change name, password, and lock status
- ▶ Set call forward and speed dial numbers
- ▶ Change volume settings
- ▶ Change time and date format
- ▶ Create and save a personal time schedule
- ▶ Set alarm calls and absence messages
- ▶ Review local call logs
- ▶ Change phone answer options

EasySet can be installed on the same dedicated computer as the OfficeServ Link or another computer communicating with OfficeServ Link, which is also dedicated for OfficeServ CTI applications. The OfficeServ Link application must be installed and configured before installing EasySet.



System Requirements

OfficeServ Link and EasySet installation and operation require the following minimum system requirements.

- Microsoft Windows 2000 (Service Pack 2 or higher), Windows XP (Service Pack 1 or higher), Windows 2003, or Windows Vista** (Business or higher) operating system software
- Pentium 4 1.6 GHz (or higher) microprocessor
- 512 MB (or higher) RAM
- 20 GB (or larger) hard disk drive
- CD-ROM
- 10/100 Network Interface Card (NIC)
- Standard VGA monitor, keyboard, and mouse
- TCP/IP configuration

Microsoft Windows is a registered trademark of Microsoft Corporation in the USA and/or other countries.
 *OfficeServ Link is required for all OfficeServ CTI Applications connected to the Samsung Portfolio of Products.
 **OfficeServ Link only. OfficeServ EasySet will not run under Windows Vista.

Features subject to change without notice.

Key Telephone Requirements

The following table identifies the minimum connection and software requirements needed to connect the OfficeServ Link to the family of Key Telephone Systems.

Key Telephone System	Minimum Software Version
OfficeServ 100	2.4x or Higher
OfficeServ 500	2.4x or Higher
OfficeServ 7100	4.01 or Higher
OfficeServ 7200	2.4x or Higher
OfficeServ 7400	3.3x or Higher

